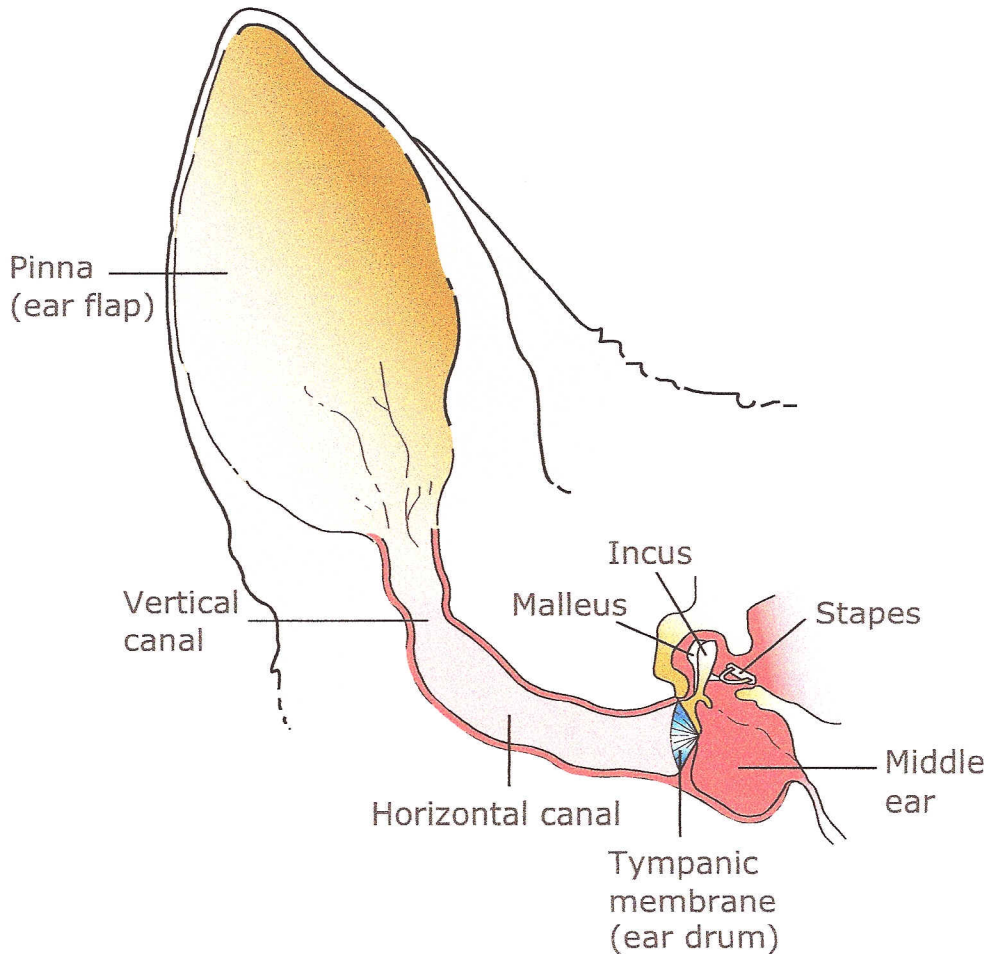


Ear Canal - Dog: Anatomy and description of ear and its diseases.



Used Under License  
Copyright© Lifelearn Inc.

The ear includes the pinna, external ear canal, eardrum, middle ear, and inner ear. The pinna collects and deflects sound waves down the ear canal to the eardrum. From the eardrum, sound passes through the bones of the middle ear to the inner ear and the brain. Any or all of these parts can be affected by disease. Otitis externa indicates an inflammation of the ear parts before the eardrum; otitis media involves the middle ear; and otitis interna involves the inner ear. In severe cases, all three locations can be affected. Inflammation can be caused by bacterial or yeast infection, foreign bodies such as grass, ear mites or other parasites, allergies, immune disease, structural abnormalities such as polyps, etc. Hair growing in the external ear canal rarely causes problems and should not be routinely removed. Common symptoms of inflammatory otitis include redness, swelling, itching, head shaking, discharges, and foul smell. Further details about specific ear conditions and treatments can be found in the Client Education Handout Series.