

Robinson Veterinary Services

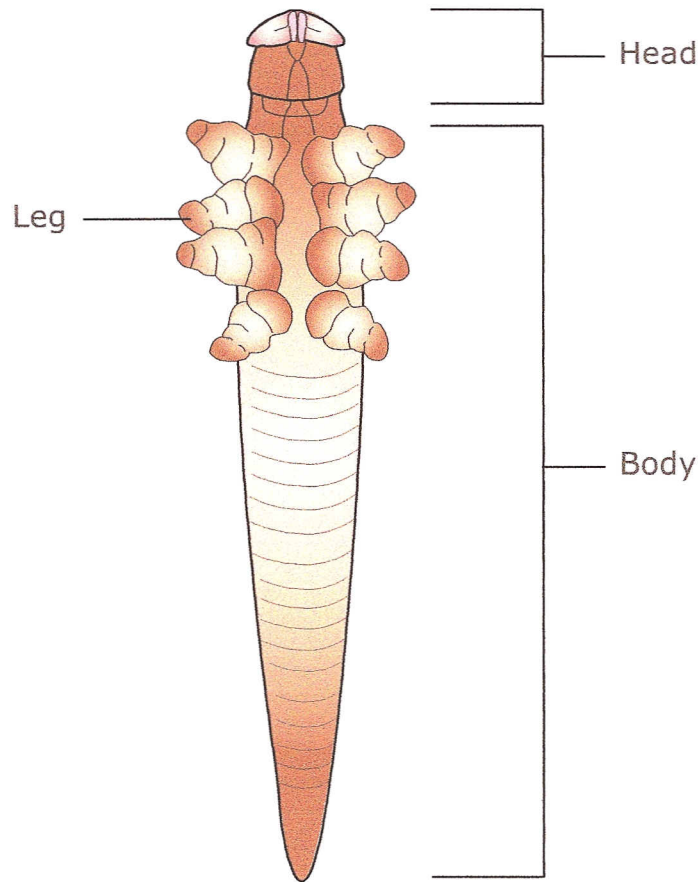
3285 London Line Wyoming, ON N0N1T0

Phone: 519-542-9588

Fax: 519-542-8789

Web: www.robsonvet.com

Demodex Mite - Adult: Demodectic mange.



Actual size 1/64" (0.25mm)

Used Under License
Copyright© Lifelearn Inc.

Demodex canis is a parasite that is found in low numbers in the hair follicles of healthy dogs. Demodectic mange, 'red mange', or simply 'demodex' is a skin condition that develops when the mites are able to grow uncontrollably. The predisposition to red mange is usually due to a weak immune system caused by a genetic defect. It is seen most commonly in puppies, and whole litters are often affected. If an adult dog develops this disease, it usually has a serious immune disease. Demodectic mange is NOT contagious to other dogs or to humans. Symptoms include patchy hair loss without itching, and it usually starts around the eyes. The disease may stay localized to a few patches, or may spread to involve numerous areas of the body (generalized demodex). It is common for secondary skin infections to develop. Diagnosis of demodex requires the identification of excessive numbers of mites from deep skin scrapings. Further information about this and associated conditions can be found in our Client Education Handout Series.