

Robinson Veterinary Services

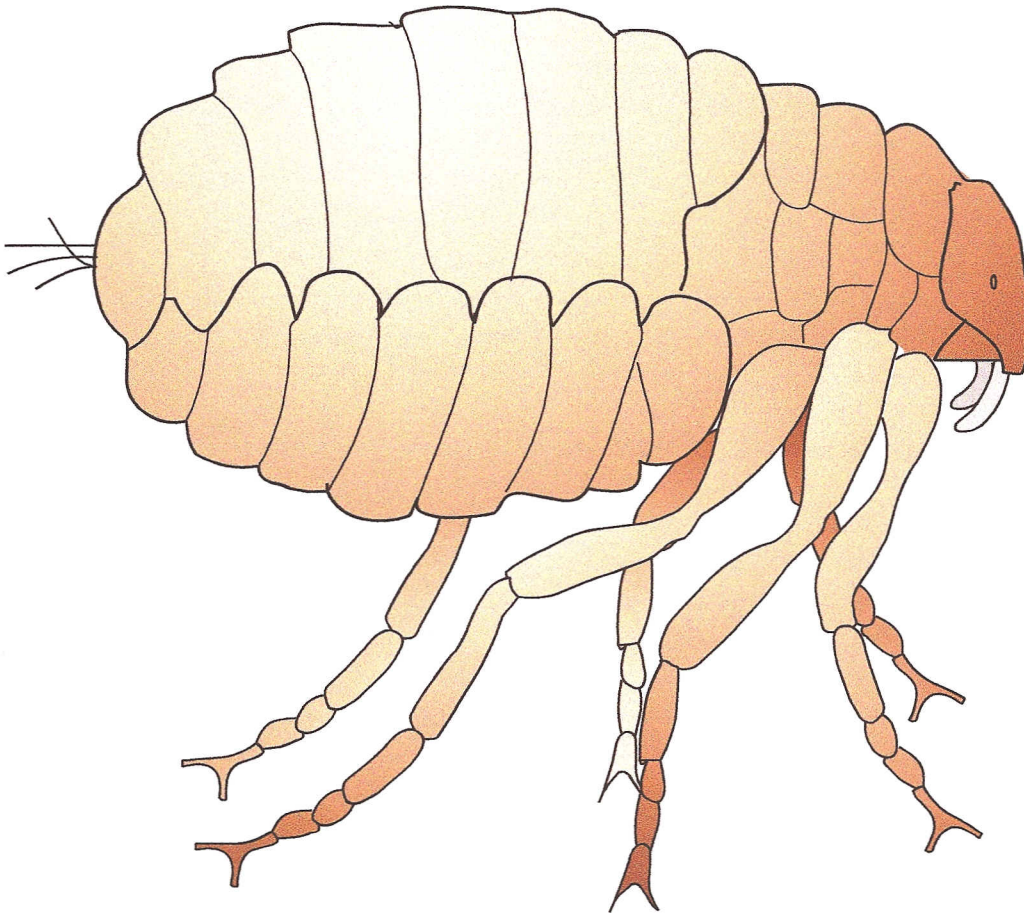
3285 London Line Wyoming, ON N0N1T0

Phone: 519-542-9588

Fax: 519-542-8789

Web: www.robinsonvet.com

Flea - Adult: Adult flea with references to F.A.D., anemia, tapeworms.



Actual size 1/8" (2-3mm)

Used Under License
Copyright© Lifelearn Inc.

An adult flea is a bloodsucking external parasite. In a normal, healthy pet, one or two fleas may not cause serious problems. However, if a pet has a heavy infestation of fleas, there can be a significant blood loss to these parasites. This can represent a serious health hazard to young or debilitated animals. Fleas can carry several diseases, including plague, and are an intermediate host for a common tapeworm of dogs and cats. When fleas feed on an animal, they inject a microscopic amount of saliva in the bite wound. This saliva can be enough to trigger a profound skin reaction called 'flea allergy dermatitis' in sensitive or allergic animals. Further information about fleas and the diseases they cause can be found in our Client Education Handout Series.