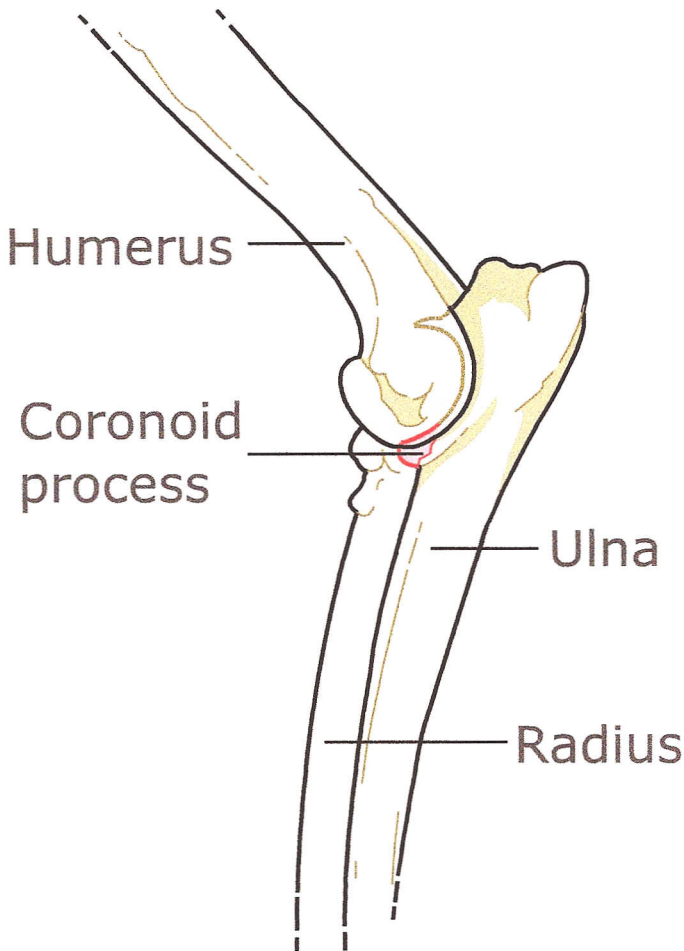


Fragmented Coronoid Process: FCP of the elbow joint.



Used Under License
Copyright© Lifelearn Inc.

The coronoid processes are small projections of bone located on the ulna. They form part of the elbow joint. There are 2 coronoid processes on each ulna, the medial and lateral coronoid processes, located on each side of the elbow joint. A fragmented coronoid process (FCP) occurs when a fragment of the coronoid process breaks off into the joint. It is a developmental abnormality that occurs during growth and development of a puppy. It is now thought that FCP develops due to abnormal stress in the elbow joint as a result of poor conformation. The disease is most common in large breed dogs, especially males, and appears to have a hereditary basis. It usually occurs bilaterally, or in both elbows, in affected dogs, and causes secondary arthritis. Surgical repair is required to treat this condition. Affected dogs should not be used for breeding.