

Robinson Veterinary Services

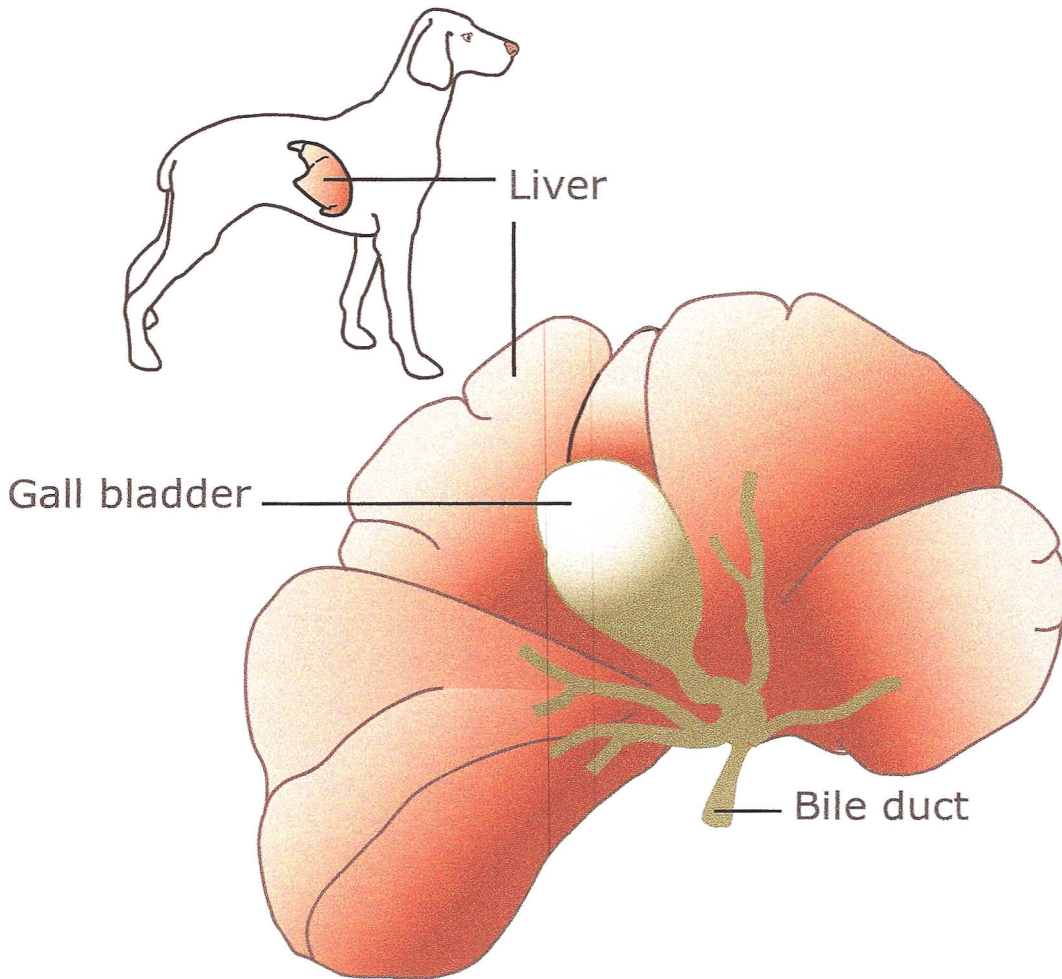
3285 London Line Wyoming, ON N0N1T0

Phone: 519-542-9588

Fax: 519-542-8789

Web: www.robinsonvet.com

Liver and Gall Bladder - Dog: Liver and gall bladder disease in the dog.



Used Under License
Copyright© Lifelearn Inc.

The liver is a multi-lobed organ that is found in the upper abdomen. It has many important functions including the manufacture and storage of proteins and fats that are needed throughout the body. One of the most important digestive functions of the liver is to manufacture bile. After it is made within the liver cells, bile flows out of the liver into the gall bladder, where it is stored until needed for digestion. When food is being digested, the gall bladder contracts and bile drains through the bile ducts into the duodenum. Dogs can suffer from many liver conditions, including portosystemic shunts, viral hepatitis, cirrhosis, and cancer. Liver cancer can be primary, where the tumor forms in the liver, or can be secondary or metastatic, spreading to the liver by means of the circulatory system. For further information on individual liver diseases, see our Client Education Handout Series.