

Robinson Veterinary Services

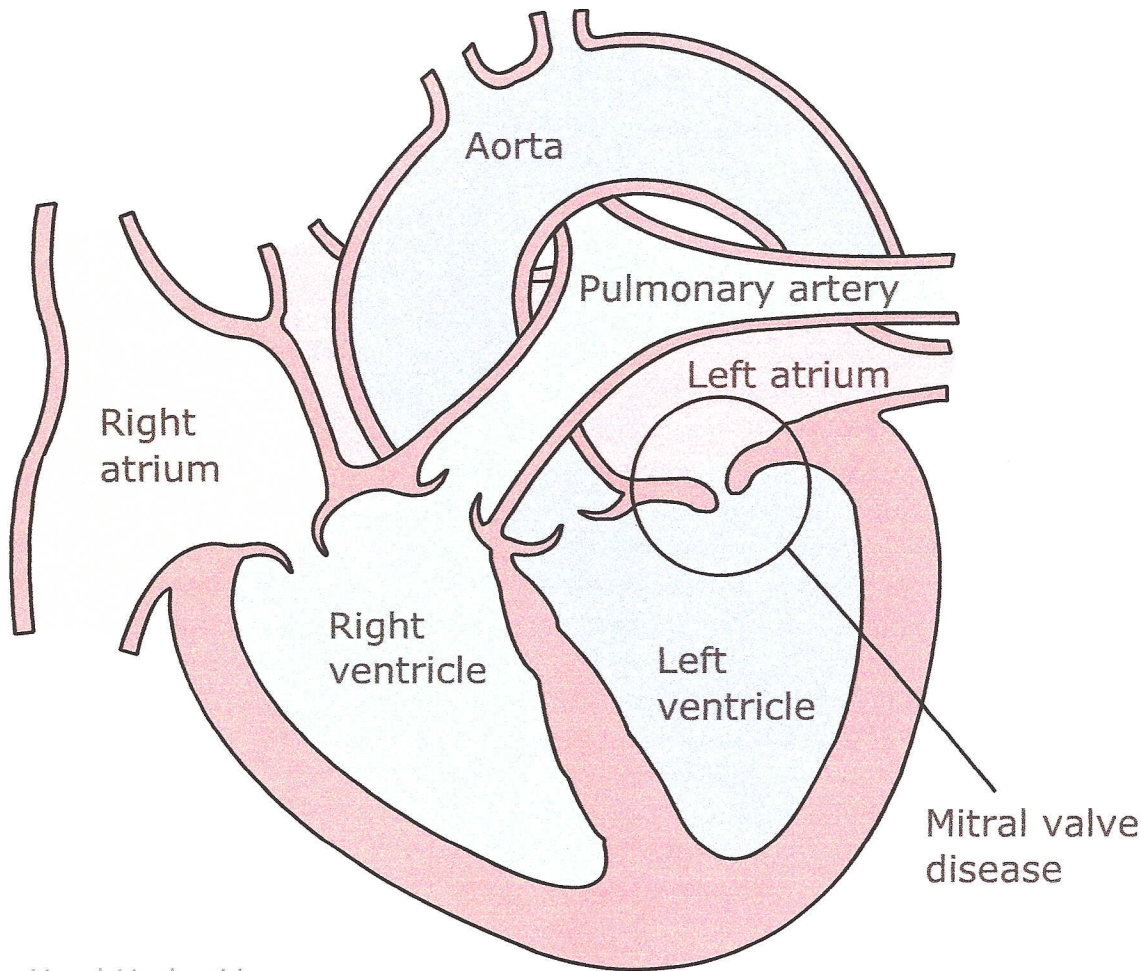
3285 London Line Wyoming, ON N0N1T0

Phone: 519-542-9588

Fax: 519-542-8789

Web: www.robinsonvet.com

Heart - Mitral Valve Disease: Mitral insufficiency, mitral prolapse, chordae rupture.



Used Under License
Copyright© Lifelearn Inc.

The mitral valve is a one way valve sitting between the left atrium and the left ventricle, that allows blood to flow into the ventricle during diastole and prevents backflow into the atrium during systole. The membranous valve is made up of 3 separate leaflets that attach to the wall of the heart between the atrium and ventricle. Thin cords (chordae tendinae) run from their free edges into the ventricle, anchoring the leaflets so that they don't fall back into the atrium during contraction. Mitral valve disease occurs when the valve becomes leaky, usually due to degeneration. Mitral insufficiency occurs if the valve membranes become thickened or irregular (called endocardiosis) so that they do not seal properly. With mitral valve prolapse, either the valve tissue or the cords become stretched so that the valve prolapses or falls back into the atrium during contraction. Chordae rupture is an infrequent but serious problem that occurs if one or more cords suddenly break. All of these conditions lead ultimately to heart failure.