

Robinson Veterinary Services

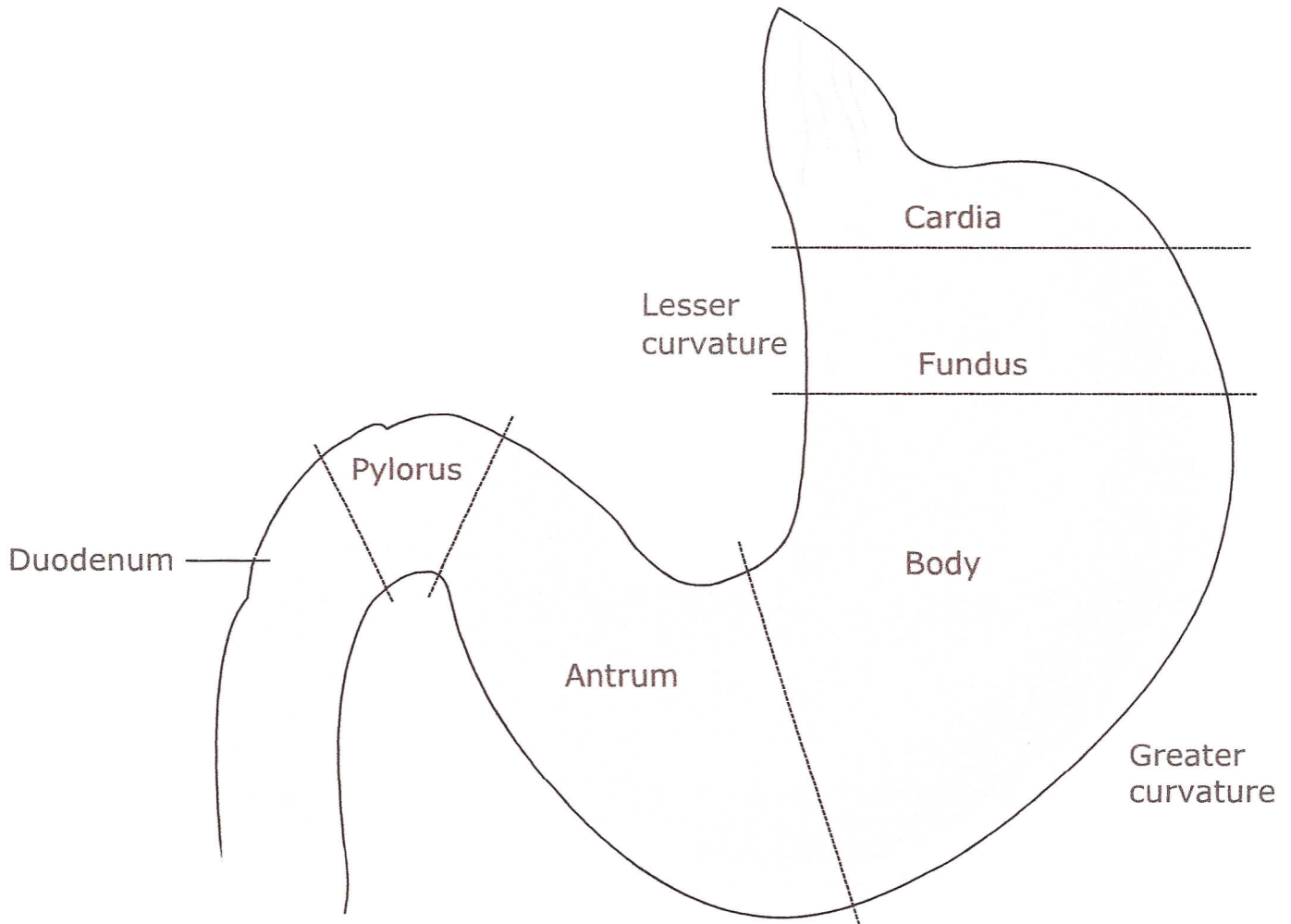
3285 London Line Wyoming, ON N0N1T0

Phone: 519-542-9588

Fax: 519-542-8789

Web: www.robinsonvet.com

Stomach: Parts of the stomach with labels.



Used Under License
Copyright© Lifelearn Inc.

The 5 anatomical regions of the stomach are shown on this illustration, which is drawn as if you are looking down at an animal that is lying on its back. The digestion of food starts in the stomach. The muscular walls of the stomach contract to mix the food and break it down into smaller pieces. The lining of the stomach secretes acids that start chemical digestion. As the food is liquified it is pushed forward into the pylorus where muscular contractions force it into the duodenum where chemical digestion continues. The pancreas runs along the greater curvature of the stomach and curves around to pass along the duodenum. The pancreatic ducts enter the duodenum near the pylorus.