

Robinson Veterinary Services

3285 London Line Wyoming, ON N0N1T0

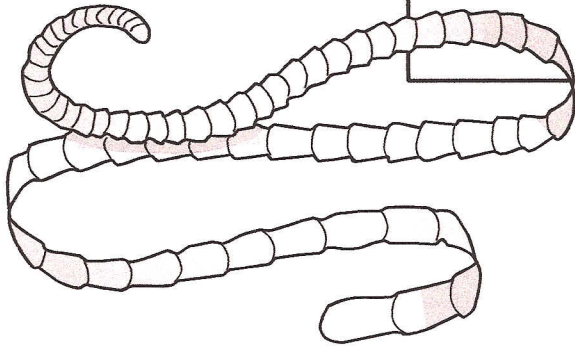
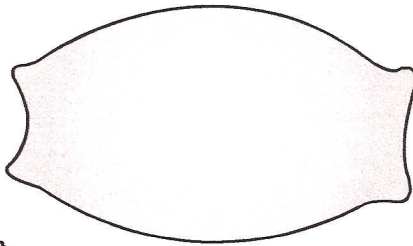
Phone: 519-542-9588

Fax: 519-542-8789

Web: www.robsonvet.com

Tapeworm: Adult tapeworm and proglottid.

Tapeworm segment
as it appears in stool
1/8" (2-5mm)



Adult tapeworm should
be up to 8" (20cm) long

Used Under License
Copyright© Lifelearn Inc.

Adult tapeworms are long, flattened, whitish worms that have visible ridges or segments along their body. It is rare to see adult tapeworms in the stool of an infected animal since the adult tapeworm is usually firmly anchored to the host's intestinal lining by means of sharp hooks in its mouth. Instead, tapeworm proglottids, or individual segments, will be seen on the outside of the stool or on the skin around the pet's rectum. When fresh, these segments move around, but within a short time, they will dry out. Each segment contains up to 20 eggs that will be released into the environment where they can be picked up by their intermediate host. A dog or cat cannot pass a tapeworm infection directly to another dog or cat. For further information, please see the Illustration "Tapeworm Life Cycle" or refer to our Client Education Handout Series.